

CULTURED STONE®

The Preferred Name In Stone®

Product Selection Guide



Inspiration. Vision. Cultured Stone®

Taste and trends change in time and architectural styles are revisited and reinvented. Cultured Stone® stone veneer draws inspiration from leading architects and designers in the industry to bring their visions to life in stone veneer.

Cultured Stone® veneer stone can bring your vision to life, whatever the style of your home, whether you're bringing your dream house to fruition or adding an accent to your home.

Wolf Creek Country Ledgestone



Cultured Stone® Introduces Three New Colors

Hudson Bay Country Ledgestone

Hudson Bay Country Ledgestone stone veneer brings together an array of rich browns and earth tones to create a warm neutral ambiance with a sense of permanence for both interior and exterior use. The versatile personality of Hudson Bay Country Ledgestone, makes it suitable for a wide variety of architectural styles and color palettes.



Wolf Creek Country Ledgestone

Stately, timeless Wolf Creek Country Ledgestone stone veneer is remarkable in its authenticity. An exquisite colorway that includes saffron yellows, clean browns and rich mulled rusts and plums, Wolf Creek Country Ledgestone is suitable for a variety of architectural styles including Virginia Hunt Country, Country French, Tuscan and Craftsman.



Black Mountain Pro-Fit® Alpine Ledgestone

This new color in the popular Pro-Fit® Alpine Ledgestone stone veneer texture complements darker and richer color palettes of accompanying materials. With a palette that blends granite greens with hints of nugget and plum, it is exceptionally suitable for Craftsman, Prairie and contemporary homes.



Cast-Fit™, Understated Elegance in Two Colors

New from Cultured Stone®, Cast-Fit™ stone veneer represents a thoughtful response to today's architectural trend toward clean, uninterrupted, quietly sophisticated materials. While Cast-Fit™ Cultured Stone® veneer was developed to fill the need for cladding products suitable for use in the underserved contemporary architecture category, it is reminiscent of venerable European architectural materials. The scale and understated color palette of Cast-Fit™ make it appropriate for both commercial and residential architectural use in a wide range of styles, including Italianate, Beaux Arts, Contemporary, Federal and Colonial.

This versatile product will be equally at home on a stately public building or on a charming single family residential home. Available in two sizes and two neutral colorways—one warm, the other cool—Cast-Fit™ may be further customized with self-color or contrasting mortar.



French Gray Cast-Fit™

French Gray Cast-Fit™ is a rich, sophisticated colorway evoking nature's subtle shadows. A warm, weighty neutral, French Gray will complement a variety of home and landscape styles and colors. Shown: Nominal size 12" x 24". Also available in 8" x 16"



Parchment Cast-Fit™

This crisp new colorway brings together three shades of fresh cream. The result is a patina on the face of the stone that hints of timelessness. Parchment represents the cool side of the Cast-Fit™ neutral palette. Shown: Nominal size 8" x 16". Also available in 12" x 24"



Cast-Fit™ Watertable/Sills are available in two colors. Shown: French Gray Nominal size 2 1/2" x 20"



A Solid Choice

There is no mistaking the impact of manufactured stone veneer as an architectural element. A closer look reveals the individual and varied shapes, textures, cuts and colors that impart character. Take Southern LedgeStone's blend of regular and irregular shapes, the epitome of rustic charm. The weathered texture of Del Mare LedgeStone® evokes a warm and inviting Mediterranean retreat. Or rugged and refined Cobblefield® stone veneer that emulates the architecture of rural 19th-century America. No matter which style you choose, you are making a solid choice with Cultured Stone® veneer. Once again, Cultured Stone® manufactured stone was named the #1 brand in *Builder Magazine's* 2010 Brand Use Study for the categories of "Brand Familiarity," "Quality Rating," "Brands Used The Most" and "Brands Used In The Past Two Years." Browse the pages that follow, and for more information, visit www.culturedstone.com.

BRAND LEADER
Builder
2010
Nalley Award



Chardonnay Country Ledgestone

COUNTRY LEDGESTONE



Aspen Country Ledgestone (CSV-20008)



Black Rundle Country Ledgestone (CSV-391272)



Bucks County Country Ledgestone (CSV-368183)



Caramel Country Ledgestone (CSV-20007)



Chardonnay Country Ledgestone (CSV-20006)



Eucalyptus Country Ledgestone (CSV-20050)



Aspen Country LedgeStone



Hudson Bay Country LedgeStone (CSV-614060)



Mojave Country LedgeStone (CSV-20042)



Red Rock Country LedgeStone (CSV-387453)



Shale Country LedgeStone (CSV-20044)



White Oak Country LedgeStone (CSV-20046)



Wolf Creek Country LedgeStone (CSV-588939)

DRystack LEDGESTONE



Caramel Drystack Ledgestone (CSV-2007)



Chardonnay Drystack Ledgestone (CSV-2012)



Suede Drystack Ledgestone (CSV-2010)

PRO-FIT® ALPINE LEDGESTONE



Black Mountain Pro-Fit® Alpine Ledgestone (CSV-614048)



Black Rundle Pro-Fit® Alpine Ledgestone (CSV-449974)



Chardonnay Pro-Fit® Alpine Ledgestone (CSV-420113)



Harvest Pro-Fit® Alpine Ledgestone (CSV-420114)



Pheasant Pro-Fit® Alpine Ledgestone (CSV-420117)



Caramel Drystack Ledgestone



Southwest Blend Pro-Fit® Ledgestone

PRO-FIT® LEDGESTONE



Autumn Pro-Fit® Ledgestone (PF-8015)



Gray Pro-Fit® Ledgestone (PF-8018)



Mojave Pro-Fit® Ledgestone (PF-8014)



Platinum Pro-Fit® Ledgestone (PF-8017)



Shale Pro-Fit® Ledgestone (PF-8016)



Southwest Blend Pro-Fit® Ledgestone (PF-8019)

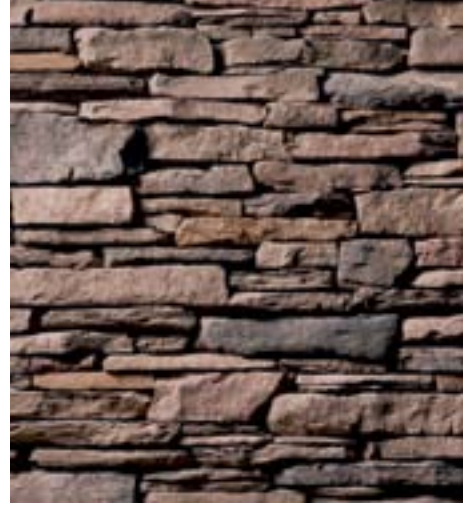
SOUTHERN LEDGESTONE



Aspen Southern Ledgestone (CSV-430778)



Bucks County Southern Ledgestone (CSV-2056)



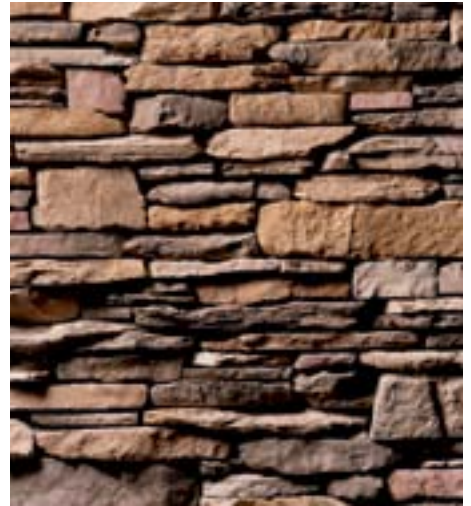
Chardonnay Southern Ledgestone (CSV-2054)



Fog Southern Ledgestone (CSV-2028)



Gray Southern Ledgestone (CSV-387448)



Rustic Southern Ledgestone (CSV-2055)



Walnut Southern Ledgestone (CSV-2027)



Bucks County Southern Ledgestone



Palermo and Patina Del Mare Ledgestone® Blend

DEL MARE LEDGESTONE®



Barossa Del Mare Ledgestone® (CSV-498730)



Burnt Ochre Del Mare Ledgestone® (CSV-498728)



Kapalua Del Mare Ledgestone® (CSV-498727)



Palermo Del Mare Ledgestone® (CSV-499401)



Patina Del Mare Ledgestone® (CSV-498729)



Sangria Del Mare Ledgestone® (CSV-498731)

COBBLEFIELD®



Chardonnay Cobblefield® (CSV-387860)



Desert Blend® Cobblefield® (CSV-2066)



Gray Cobblefield® (CSV-2025)



San Francisco Cobblefield® (CSV-2037)



Texas Cream Cobblefield® (CSV-2083)

ROCKFACE



Bucks County Rockface (CSV-387778)

CAST-FIT™



French Gray Cast-Fit™



Parchment Cast-Fit™



EUROPEAN CASTLE STONE



Bucks County European Castle Stone (CSV-573784)



Chardonay Limestone

LIMESTONE



Chardonay European Castle Stone (CSV-573786)



Bucks County Limestone (CSV-2074)



Cedar Limestone (CSV-2044)



Chardonay Limestone (CSV-2045)



Golden Buckeye Limestone (CSV-528458)



Suede Limestone (CSV-2046)



Chardonay Dressed Fieldstone

ANCIENT VILLA LEDGESTONE™



Chianti Ancient Villa Ledgestone™ (CSV-499965)



Siena Ancient Villa Ledgestone™ (CSV-499964)



Toscana Ancient Villa Ledgestone™ (CSV-499966)

DRESSED FIELDSTONE



Aspen Dressed Fieldstone (CSV-2040)



Bucks County Dressed Fieldstone (CSV-2030)



Chardonay Dressed Fieldstone (CSV-2042)



OLD COUNTRY FIELDSTONE



Chardonnay Old Country Fieldstone (CSV-368105)



Piedmont Old Country Fieldstone (CSV-368134)



Riviera Old Country Fieldstone (CSV-368117)



Romana Old Country Fieldstone (CSV-368168)



Tudor Old Country Fieldstone (CSV-368118)

CORAL STONE



Fossil Reef Coral Stone (CSV-354399)

STREAM STONE

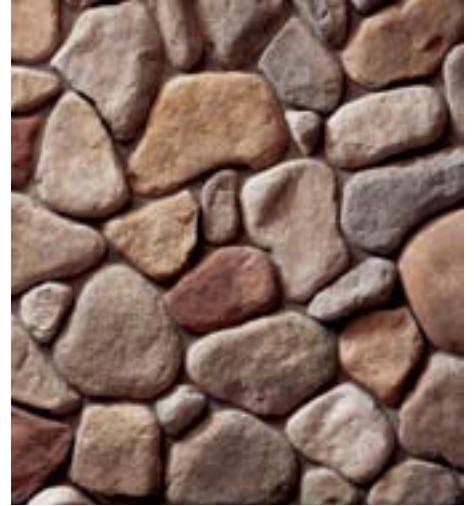


Spring Stream Stone (CSV-2070)



Summer Stream Stone (CSV-2071)

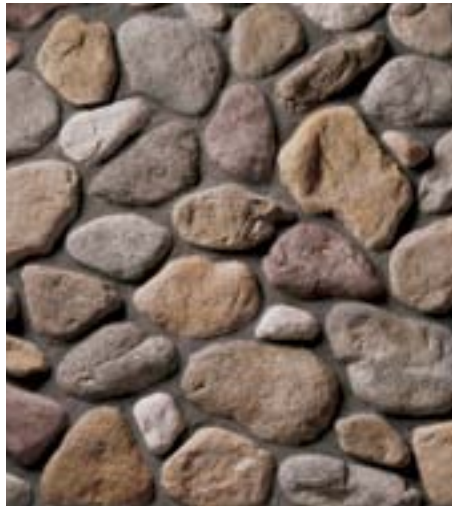
RIVER ROCK



Earth Blend River Rock (CSV-2084)



Lake Tahoe River Rock (CSV-2057)



Lakeshore River Rock (CSV-2004)



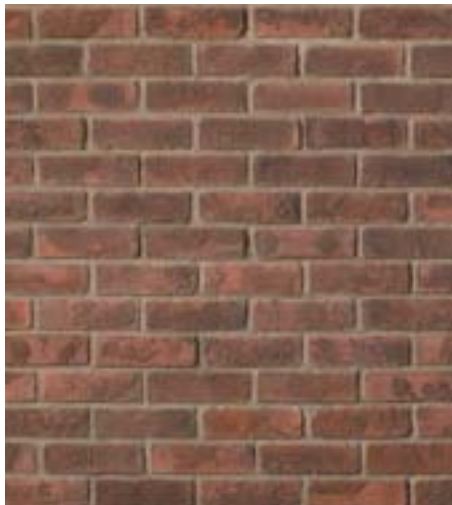
Whitewater River Rock (CSV-2053)

SPLIT FACE



Superior Split Face (CSV-2003)

CULTURED BRICK® VENEER



Antique Red Used Brick (CB-4052)



High Desert Used Brick (CB-418953)



Taupe Trimstone and Watertable with Eucalyptus Country Ledge Stone



Taupe Electrical Light Fixture with Chardonnay Country Ledge Stone

Architectural Stone Trim

For the Architectural Stone Veneer Trim product numbers, or for additional information on Cultured Stone® veneer products and services, visit www.culturedstone.com.



*Electrical Box Stone Veneer:
Single Receptacle shown in Mocha
6" x 8" x 1 1/4"



*Electrical Box Stone Veneer:
Standard Light Fixture shown in Gray
8" x 10" x 1 1/4"



*Electrical Box Stone Veneer:
Large Light Fixture shown in Gray
9 1/2" x 15" x 1 1/4"



Keystone
shown in Taupe
5 1/2" x 8" x 10" x 1 1/4"



Trim Stone
shown in Gray
Nominal size 6" x 8" x 1 1/8"



Tuscan Lintel
shown in Mocho
6" x 22" x 2 5/8"



Watertable/Sill
shown in Taupe
Nominal size 2 1/2" x 18"



Cast-Fit™ Watertable/Sill
shown in French Gray.
Also available in Parchment.
Nominal size 2 1/2" x 20"



Champagne

Gray

Mocho

Taupe

*Electrical Box Stones available in Gray, Mocho and Taupe only.
*Cast-Fit™ Watertable/Sill available in French Gray and Parchment only.
Other products shown above available in all four colors.



Marsh Hearthstones and Taupe Trimstone with Chardonnay Country Ledgestone



Gray Capstones and Pier Caps with Fog Southern Ledgestone

Capstones



24" x 24" Flagstone Pier Cap
shown in Champagne.
Also available in 32" x 32"

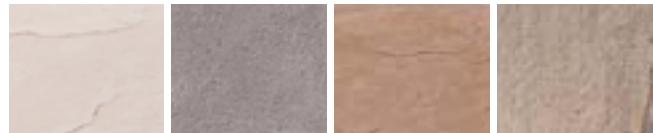


10" x 20" Flat Textured Capstones
shown in Champagne.
Also available in 12" x 20"



12" x 20" Flagstone Sloped Wall Cap
shown in Gray.
Also available in 16" x 20"

Capstones available in all four colors.



Champagne

Gray

Mocha

Taupe

Note: Flat Textured Capstones can be used for fireplace hearths.
Dimensions are nominal.

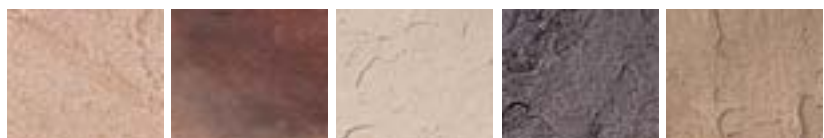
Hearthstones



Hearthstone
shown in Marsh

Note: All Hearthstones are nominal 19" x 20". Hearthstones not suitable for foot traffic.

Hearthstones available in all five colors.



Blond

Chardonnay

Cream

Gray

Marsh

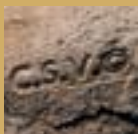
Color Selection

We've designed our trim accessories to complement our textures and colors perfectly. Use the chart below as a guide to selecting the Architectural Stone Trim that best harmonizes with the Cultured Stone® veneer products you have chosen.

| PRO-FIT® ALPINE LEDGESTONE | ACCESSORIES | HEARTHSTONES |
|----------------------------------|----------------------|--------------------------|
| BLACK MOUNTAIN | GRAY | GRAY |
| BLACK RUNDLE | GRAY, TAUPE | GRAY, MARSH |
| CHARDONNAY | TAUPE | CHARDONNAY, MARSH |
| HARVEST | TAUPE | BLOND, MARSH |
| PHEASANT | GRAY | GRAY |
| ANCIENT VILLA LEDGESTONE™ | | |
| CHIANTI | TAUPE | MARSH |
| SIENA | MOCHA, TAUPE | BLOND, MARSH |
| TOSCANA | MOCHA, TAUPE | BLOND, CHARDONNAY, MARSH |
| CAST-FIT™ | | |
| PARCHMENT | PARCHMENT, CHAMPAGNE | CREAM |
| FRENCH GRAY | FRENCH GRAY, TAUPE | MARSH |
| CULTURED BRICK® | | |
| ANTIQUE RED | TAUPE | CHARDONNAY, MARSH |
| HIGH DESERT | TAUPE | CHARDONNAY, MARSH |
| COBBLEFIELD® | | |
| CHARDONNAY | MOCHA, TAUPE | CHARDONNAY, MARSH |
| DESERT BLEND | MOCHA, TAUPE | MARSH |
| GRAY | GRAY | GRAY |
| SAN FRANCISCO | GRAY, TAUPE | GRAY |
| TEXAS CREAM | CHAMPAGNE | CREAM |
| CORAL STONE | | |
| FOSSIL REEF | CHAMPAGNE | CREAM |
| COUNTRY LEDGESTONE | | |
| ASPEN | MOCHA, TAUPE | GRAY, MARSH |
| BLACK RUNDLE | GRAY, TAUPE | GRAY, MARSH |
| BUCKS COUNTY | GRAY, TAUPE | GRAY, MARSH |
| CARAMEL | TAUPE | BLOND, MARSH |
| CHARDONNAY | MOCHA, TAUPE | CHARDONNAY, MARSH |
| EUCALYPTUS | GRAY, TAUPE | CHARDONNAY, MARSH |
| HUDSON BAY | GRAY, TAUPE | CHARDONNAY, GRAY, MARSH |
| MOJAVE | MOCHA, TAUPE | BLOND, MARSH |
| RED ROCK | MOCHA, TAUPE | CHARDONNAY, MARSH |
| SHALE | GRAY, TAUPE | GRAY, MARSH |
| WHITE OAK | CHAMPAGNE | CREAM |
| WOLF CREEK | GRAY, TAUPE | GRAY, MARSH |
| DEL MARE LEDGESTONE® | | |
| BAROSSA | MOCHA, TAUPE | BLOND, CHARDONNAY, MARSH |
| BURNT OCHRE | MOCHA, TAUPE | BLOND, MARSH |
| KAPALUA | MOCHA, TAUPE | CHARDONNAY, MARSH |
| PALERMO | TAUPE | BLOND, MARSH |
| PATINA | GRAY, TAUPE | CHARDONNAY, MARSH |
| SANGRIA | MOCHA, TAUPE | CHARDONNAY, MARSH |
| DRESSED FIELDSTONE | | |
| ASPEN | MOCHA, TAUPE | GRAY, MARSH |
| BUCKS COUNTY | GRAY, TAUPE | GRAY, MARSH |
| CHARDONNAY | MOCHA, TAUPE | CHARDONNAY, MARSH |

| DRystack LEDGESTONE | | |
|-------------------------------|-------------------------|--------------------------|
| CARAMEL | TAUPE | BLOND, MARSH |
| CHARDONNAY | MOCHA, TAUPE | CHARDONNAY, MARSH |
| SUEDE | GRAY, TAUPE | GRAY, MARSH |
| EUROPEAN CASTLE STONE | | |
| BUCKS COUNTY | GRAY, TAUPE | GRAY, MARSH |
| CHARDONNAY | MOCHA, TAUPE | CHARDONNAY, MARSH |
| LIMESTONE | | |
| BUCKS COUNTY | GRAY, TAUPE | GRAY, MARSH |
| CEDAR | MOCHA, TAUPE | MARSH |
| CHARDONNAY | MOCHA, TAUPE | CHARDONNAY, MARSH |
| GOLDEN BUCKEYE | CHAMPAGNE, TAUPE | BLOND, CREAM, MARSH |
| SUEDE | GRAY, TAUPE | GRAY, MARSH |
| OLD COUNTRY FIELDSTONE | | |
| CHARDONNAY | MOCHA, TAUPE | CHARDONNAY, MARSH |
| PIEDMONT | MOCHA, TAUPE | BLOND, CHARDONNAY, MARSH |
| RIVIERA | GRAY, TAUPE | GRAY, MARSH |
| ROMANA | TAUPE | BLOND, MARSH |
| TUDOR | GRAY, TAUPE | GRAY, MARSH |
| PRO-FIT® LEDGESTONE | | |
| AUTUMN | MOCHA, TAUPE | BLOND, MARSH |
| GRAY | GRAY | GRAY |
| MOJAVE | MOCHA, TAUPE | BLOND, MARSH |
| PLATINUM | CHAMPAGNE, GRAY | CREAM, GRAY |
| SHALE | GRAY, TAUPE | GRAY, MARSH |
| SOUTHWEST BLEND | CHAMPAGNE, TAUPE | CREAM, BLOND |
| RIVER ROCK | | |
| EARTH BLEND | MOCHA, TAUPE | MARSH |
| LAKE TAHOE | GRAY, TAUPE | GRAY |
| LAKESHORE | TAUPE | BLOND, CREAM |
| WHITE WATER | CHAMPAGNE, GRAY | CREAM |
| ROCKFACE | | |
| BUCKS COUNTY | GRAY, TAUPE | GRAY, MARSH |
| SOUTHERN LEDGESTONE | | |
| ASPEN | MOCHA, TAUPE | GRAY, MARSH |
| BUCKS COUNTY | GRAY, TAUPE | GRAY, MARSH |
| CHARDONNAY | MOCHA, TAUPE | CHARDONNAY, MARSH |
| FOG | GRAY, TAUPE | CREAM, GRAY |
| GRAY | GRAY | GRAY |
| RUSTIC | MOCHA, TAUPE | BLOND, MARSH |
| WALNUT | MOCHA, TAUPE | MARSH |
| SPLIT FACE | | |
| SUPERIOR | CHAMPAGNE, TAUPE | CREAM, MARSH |
| STREAM STONE | | |
| SPRING | CHAMPAGNE, MOCHA, TAUPE | MARSH |
| SUMMER | CHAMPAGNE, TAUPE | BLOND, MARSH |

The Cultured Stone® collection of manufactured stone veneer products is engineered to meet or exceed specifications for all major code approvals, including AC-51. They're also virtually maintenance-free and backed by a 50-Year Limited Warranty.*



Only genuine Cultured Stone® brand products have a CSV™ indicia embossed on the edge.



Visit GreenApprovedProducts.com for more information.



✓ Recycled content

Minimum of 54 percent recycled content on all Cultured Stone® veneer products.



ICC-Evaluation Service ESR-1364



Underwriters Laboratories

For additional information on Cultured Stone® veneer products and services, visit www.culturedstone.com or call 1-800-255-1727.

CULTURED STONE®

The Preferred Name In Stone®

Pub. No. 10013682. Printed in U.S.A. January 2011.

Cultured Stone® Veneer Products extends its appreciation to Canadian Stone Industries, which provided a number of the photographs featured in this publication.

* See actual warranty for details, limitations and exclusions.

Overhead, horizontal or sloped applications are not included in our building code evaluation reports or acceptances. These applications often require special approval/inspections by local building inspectors. Contact your architect or engineer for assistance designing these installations.

The product colors you see are as accurate as current photography and printing techniques allow. We suggest you look at product samples before you select colors.

The GREENGUARD INDOOR AIR QUALITY CERTIFIED Mark is a registered certification mark used under license through the GREENGUARD Environmental Institute.

